



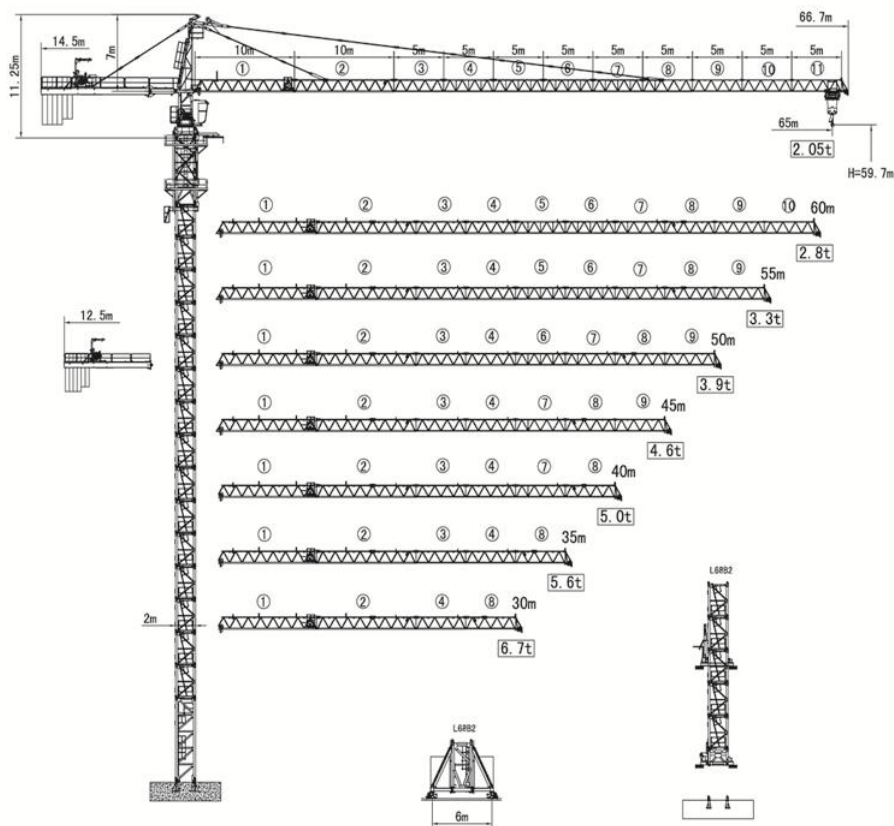
塔帽式塔式起重机 设备配置与技术参数

QTZ200(DH6520)

本数据仅供参考，如有更改，恕不另行通知

This data is for informational purposes only, and is subject to change without prior notice

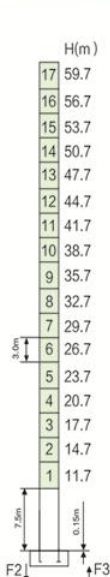
外形尺寸 Outline Dimensions



載荷特性表 Load Diagrams 10t

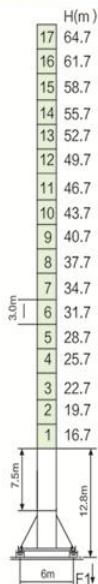
R(m)	Fall	R _{C(maxim)}	C _{max(d)}	16	20	25	30	35	40	45	50	55	60	65
65m		16.0	10.0	10.0	7.7	5.9	4.7	3.9	3.2	2.7	2.4	2.0	1.8	1.55
		31.1	5.0	5.0	5.0	5.0	5.0	4.4	3.7	3.2	2.9	2.5	2.3	2.05
60m		18.8	10.0	10	9.3	7.1	5.7	4.7	4.0	3.4	3.0	2.6	2.3	
		36.6	5.0	5.0	5.0	5.0	5.0	5.0	4.5	3.9	3.5	3.1	2.8	
55m		19.7	10.0	10	9.8	7.6	6.1	5.05	4.3	3.7	3.2	2.8		
		38.4	5.0	5.0	5.0	5.0	5.0	5.0	4.8	4.2	3.7	3.3		
50m		20.6	10.0	10.0	10.0	8.0	6.4	5.3	4.6	3.9	3.4			
		40.3	5.0	5.0	5.0	5.0	5.0	5.0	5.0	4.4	3.9			
45m		21.4	10.0	10.0	10.0	8.3	6.7	5.6	4.9	4.1				
		41.8	5.0	5.0	5.0	5.0	5.0	5.0	5.0	4.6				
40m		21.4	10.0	10.0	10.0	8.3	6.7	5.6	4.9					
35m		21.4	10.0	10.0	10.0	8.3	6.7	5.6						
30m		21.4	10.0	10.0	10.0	8.3	6.7							

塔身截面 Masts



	●	■
F2	111t	190t
F3	58t	143t
⊕	62t	

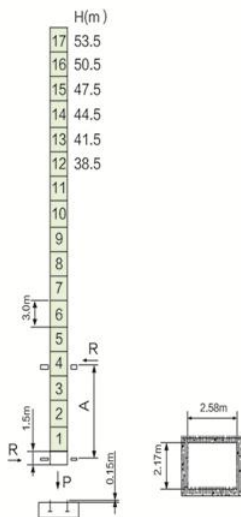
● 工作状态支反力 Reactions in service



	●	■
F1	94t	117t
⊕	73t	

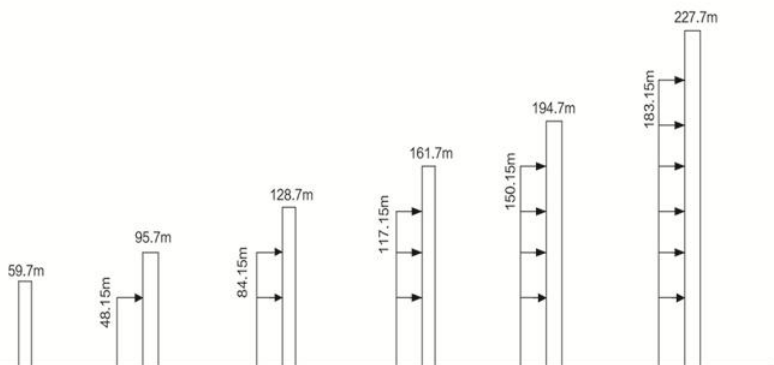
■ 非工作状态支反力 Reactions out of service

⊕ 不含平衡重及压重塔机重量 Total weight of free standing crane (exclude Counter weight & ballast)



	H	A	R	P
L68B2	53.5m	10-23m	31.4t	83t

附着位置及塔机高度 Anchorage








机构 Mechanisms 10t

名称	机构代号	工作速度 (m/min)		起重量(t)	容量(m)	电机功率
起升 Hoisting	45LVF25 ☆	双绳 2 fall	0-45	5.0	550(5层)	45
			0-90	2.5		
		四绳 4 fall	0-22.5	10.0		
			0-45	5.0		
	55RCS25	双绳 2 fall	0-42	5.0	500(5层) >500*	41
			0-84	2.5		
		四绳 4 fall	0-21	10.0		
			0-42	5.0		
变幅机构 Trolleying	6JXF5	0-63			5.5	
回转机构 Slewing	JH12 ☆	0-0.7			5.5 × 2	
电源 Power	380V (± 10%) /50Hz 61.5(57.5)kW					

*请与制造商联系 contact us please

☆标准配置 standamrd configuration

平衡重 Counter weight

					
65m	14.5m	4A+2B=23600kg	45m	12.5m	3A=14400kg
60m	14.5m	3A+2B+1C=21700kg	40m	12.5m	2A+1C=13000kg
55m	14.5m	4A+1B=20200kg	35m	12.5m	1B+2C=11000kg
50m	12.5m	4A+2B=23600kg	30m	12.5m	2A+1B+1C=14100kg
● A=4200kg B=3400kg C=2300kg					



山东大汉建设机械股份有限公司

地址：山东省济南市章丘区明水经济开发区赭山工业园

电话：+86 (531) 83260789

网址：www.dhtj.com

邮编：250200

Shandong Dahan Construction Machinery Co.,Ltd.

Add : Zheshan Industrial Part,Mingshui Development
Zone,Zhangqiu,Jinan City,Shandong Province,China

TEL : +86 (531) 83260789

Web : [http:// www.dhtj.com](http://www.dhtj.com)

ZIP CODE : 250200