



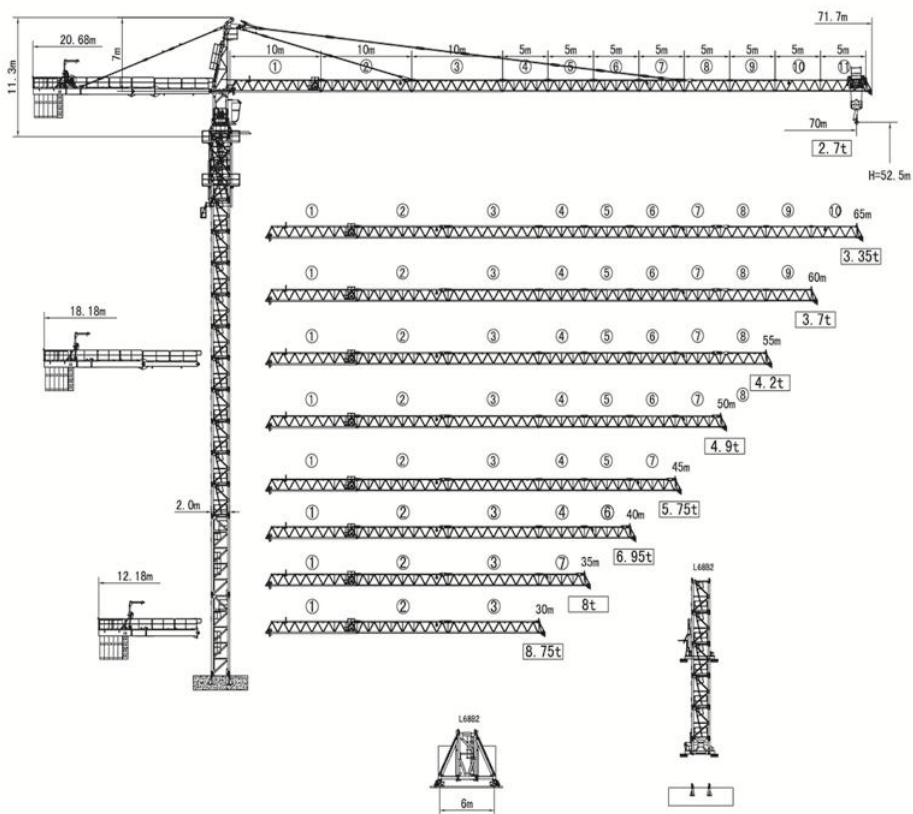
# 塔帽式塔式起重机 设备配置与技术参数

## QTZ250(DH7027)

本数据仅供参考，如有更改，恕不另行通知

This data is for informational purposes only, and is subject to change without prior notice

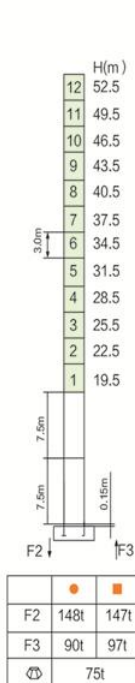
外形尺寸 Outline Dimensions



载荷特性表 Load Diagrams 16t

R(m)	Fall	RC <sub>(max)</sub>	C <sub>(max)</sub>	20	25	30	35	40	45	50	55	60	65	70
70m		16.1	16.0	12.2	9.2	7.3	5.7	4.6	3.8	3.2	2.6	2.2	1.8	1.5
		31.0	8.0	8.0	8.0	8.0	6.9	5.8	5.0	4.4	3.8	3.4	3.0	2.7
65m		17.1	16.0	13.2	10	7.9	6.3	5.2	4.4	3.7	3.1	2.6	2.25	
		32.9	8.0	8.0	8.0	8.0	7.4	6.3	5.5	4.8	4.2	3.7	3.35	
60m		17.1	16.0	13.2	10	7.9	6.3	5.2	4.4	3.7	3.1	2.6		
		32.9	8.0	8.0	8.0	8.0	7.4	6.3	5.5	4.8	4.2	3.7		
55m		17.1	16.0	13.2	10	7.9	6.3	5.2	4.4	3.7	3.1			
		32.9	8.0	8.0	8.0	8.0	7.4	6.3	5.5	4.8	4.2			
50m		17.4	16.0	13.5	10.2	8.1	6.5	5.4	4.5	3.8				
		33.6	8.0	8.0	8.0	8.0	7.6	6.5	5.6	4.9				
45m		17.8	16.0	13.8	10.5	8.4	6.7	5.6	4.65					
		34.3	8.0	8.0	8.0	8.0	7.8	6.7	5.75					
40m		18.4	16.0	14.5	11.0	8.7	7.0	5.85						
		35.6	8.0	8.0	8.0	8.0	8.0	6.95						
35m		18.4	16.0	14.5	11.0	8.7	7.0							
30m		18.6	16.0	14.6	11.1	8.75								

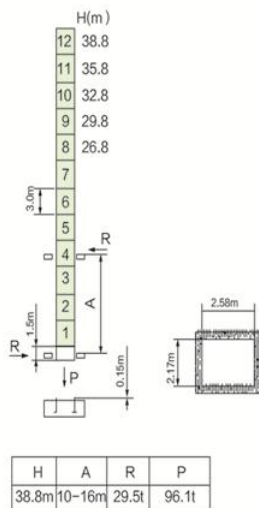
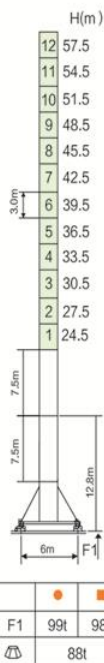
### 塔身截面 Masts



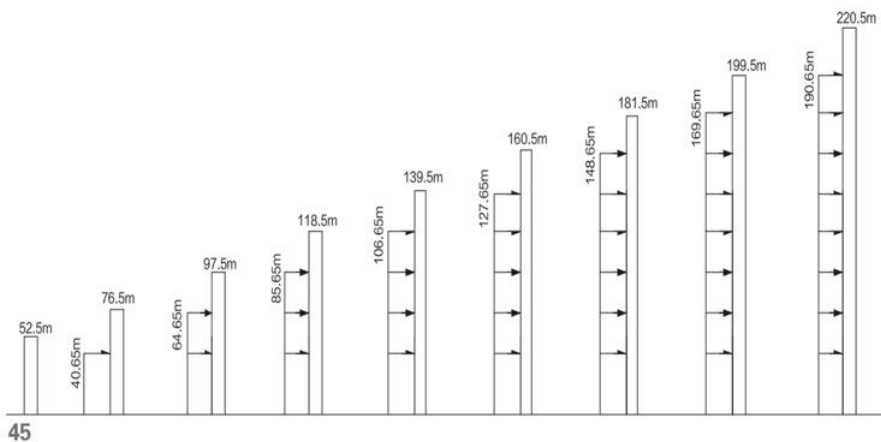
● 工作状态支反力 Reactions in service

■ 非工作状态支反力 Reactions out of service

⊕ 不含平衡重及压重塔机重量 Total weight of free standing crane (exclude Counter weight & ballast)



### 附着位置及塔机高度 Anchorage




## 机构 Mechanisms

名称	机构代号	工作速度 (m/min)		起重量(t)	容绳量(m)	电机功率
起升 Hoisting	75LVF40☆	双绳 2 fall	0-45	8.0	550(5层) 804(7层)	75
			0-90	3.0		
		四绳 4 fall	0-22.5	16		
			0-45	8.0		
	90LFV40	双绳 2 fall	0-50	8.0	1400(8层)	90
			0-100	4.0		
		四绳 4 fall	0-25	16		
			0-30	8.0		
变幅机构 Trolleying	7.5JXF8	0-65			7.5	
回转机构 Slewing	JH13C☆	0-0.7			7.5×2	
电源 Power	380V ( ± 10% ) /50Hz 97.5(112.5)kW					

\*请与制造商联系 contact us please

☆标准配置 standard configuration

## 平衡重 Counter weight

					
70m	20.68m	5CA+P+4CB=24162kg	45m	18.18m	4CA+P+2CB=18562kg
65m	20.68m	5CA+P+2CB=22762kg	40m	18.18m	3CA+P+4CB=15762kg
60m	20.68m	5CA+P=21362kg	35m	18.18m	3CA+P+1CB=13662kg
55m	18.18m	5CA+P+4CB=24162kg	30m	12.18m	4CA+P+5CB=20662kg
50m	18.18m	5CA+P+1CB=22062kg	●	P=362kg CA=4200kg CB=700kg	



## **山东大汉建设机械股份有限公司**

地址：山东省济南市章丘区明水经济开发区赭山工业园

电话：+86 ( 531 ) 83260789

网址：www.dhtj.com

邮编：250200

## **Shandong Dahan Construction Machinery Co.,Ltd.**

Add : Zheshan Industrial Part,Mingshui Development  
Zone,Zhangqiu,Jinan City,Shandong Province,China

TEL : +86 ( 531 ) 83260789

Web : [http:// www.dhtj.com](http://www.dhtj.com)

ZIP CODE : 250200